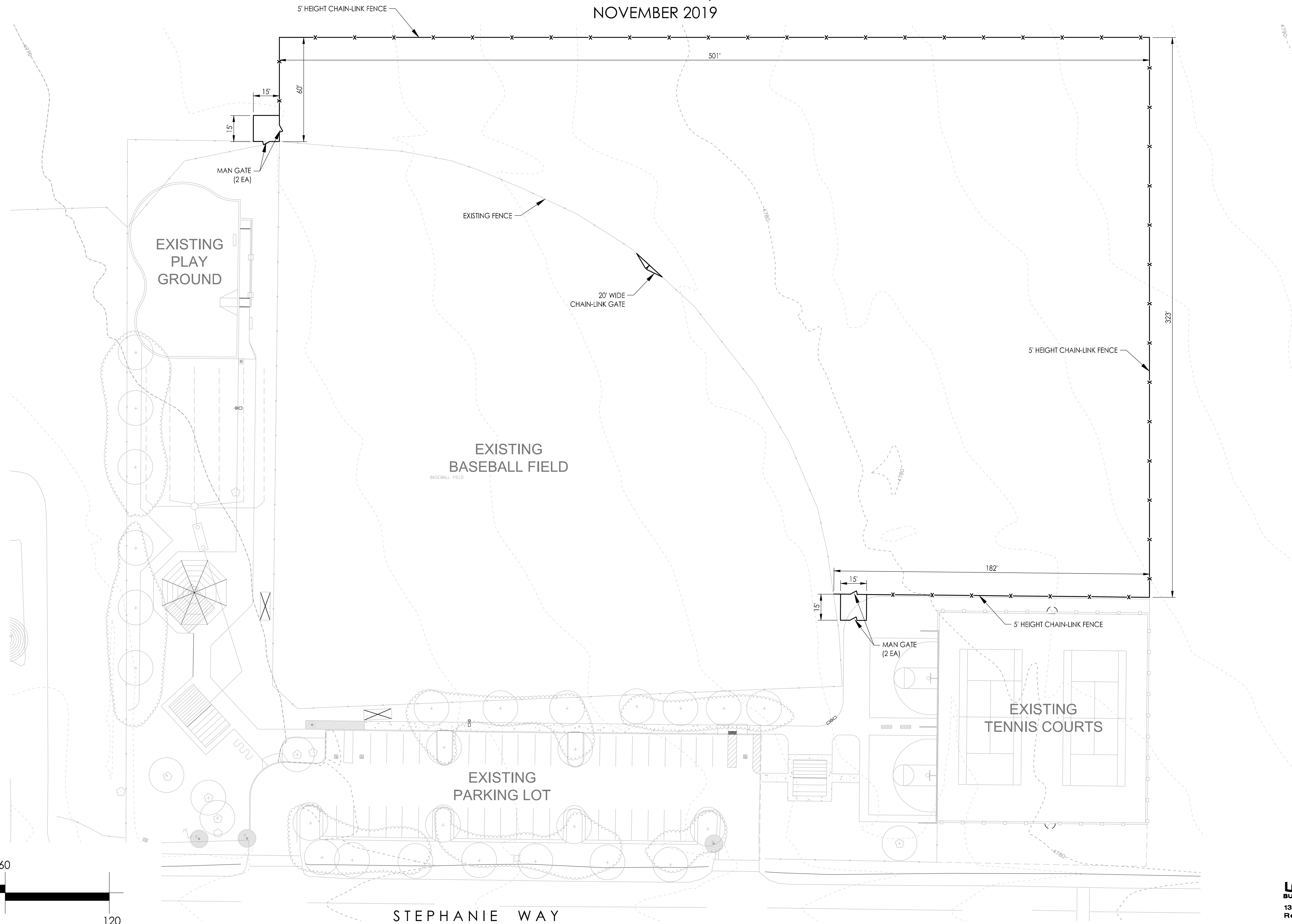


PROPOSED DOG PARK - FENCE IMPROVEMENTS ONLY

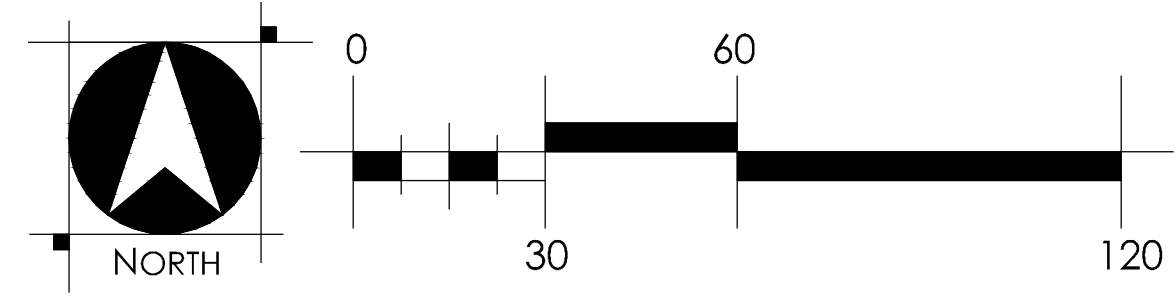
JOHNSON LANE PARK IMPROVEMENTS

DOUGLAS COUNTY, NEVADA
NOVEMBER 2019



ITEM	QUANTITY
5' HEIGHT CHAIN-LINK FENCE	1,156 LF
CHAIN LINK MAN GATE	4 EA
20' WIDE CHAIN LINK GATE	1 EA

NOTE: ALL CONSTRUCTION AND MATERIALS SHALL CONFORM TO THE 'STANDARD SPECIFICATIONS FOR PUBLIC WORKS CONSTRUCTION' (ORANGE BOOK) LATEST EDITION INCLUDING ALL ADDENDA, REVISIONS, SPECIAL PROVISIONS AND THESE PLANS.



WOOD ROGERS
BUILDING RELATIONSHIPS ONE PROJECT AT A TIME
1361 Corporate Blvd
Reno, NV 89502
Tel 775.823.4068
Fax 775.823.4066